



Quick Installation Guide

Outdoor HD IP Camera



Model: FI9803P

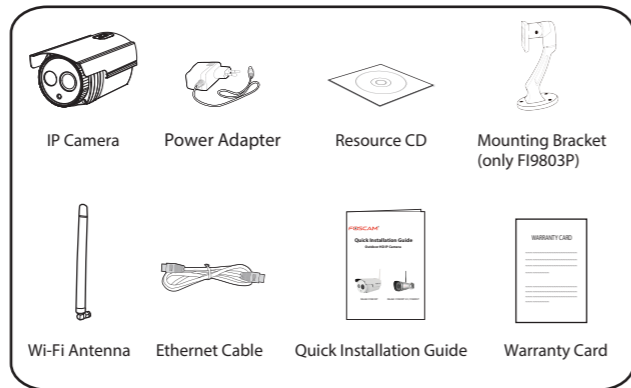


Model: FI9900P V2 / FI9800P

V1.8
EQ980309

1 Installation Notice

Package Contents

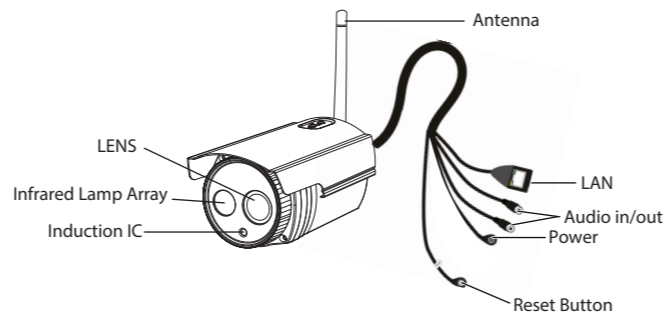


Security Warning

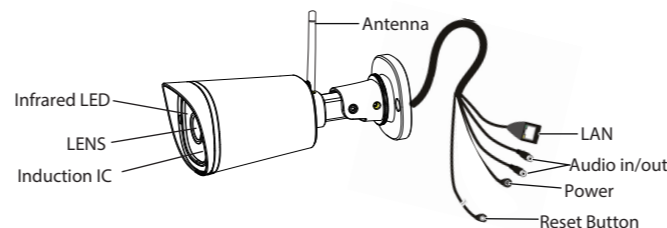
- Please change the password of your camera regularly, and use the combination of numbers, letters and special characters.
- We recommend you to update your camera to the latest firmware every three months, in order to ensure the safety of your camera and have a better product experience.
- Please keep the username and password of your camera safe, and do not tell them to others.

2 Physical Description

FI9803P



FI9900P V2 / FI9800P



3 Download APP

To install the Foscam APP on your smartphone, you can choose either of the following methods:

■ Scan QR code

If you have a QR Code APP on your smartphone, scan the code below.



■ Download from APP

You can search the term "Foscam" directly on the APP Store or Google Play Store. Then find the APP that appears with the same icon as shown above, and install it to your smartphone.

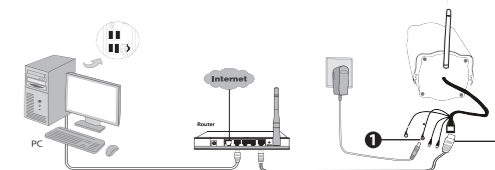
Before you continue, please note:

- Make sure your wireless router is enabled DHCP, and connected to internet.
- Make sure your smartphone is connected to your wireless router and located near the camera.
- FI9900P V2 has a 1080P video output. Make sure you have a much smoother video experience on the smartphone. It recommends that the smartphone has the following configuration:
 1. Only use the "Foscam" APP.
 2. IOS: system version 8.1 and above.
 3. Android: system version 4.1 and above, and the smartphone has a Graphics Processing Unit (GPU) function.

4 Add IP Camera

There are two methods, wired and wireless connection, for you to add IP camera via Foscam APP. You can choose either of them:

4.1 Wired Connection (recommended)



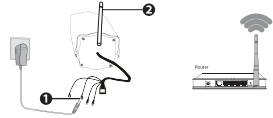
1. Connect the camera with power adapter.
2. Connect your camera with router by Ethernet cable.
3. Make sure your smartphone is connected to your wireless router.
4. Run the Foscam APP on your smartphone, register a Foscam Cloud account then log in. Please follow the steps below to add your camera.




Note:

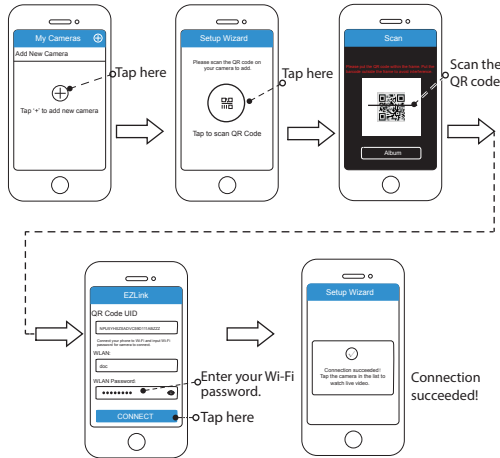
If you have added your IP camera successfully by wired connection, please do not add it again by wireless connection.

4.2 Wireless Connection



Note: Do not connect the camera with router via Ethernet cable.

1. Connect the camera with power adapter.
2. Install the wireless antenna and make it up right.
3. Make sure your smartphone is connected to your wireless router.
4. Run the Foscam APP  on your smartphone, register a Foscam Cloud account then log in. Please follow the steps below to add your camera.



Note:

If you fail to add your camera to smartphone for several times, press the "Reset" button on the camera to reset it, and then try again.

5 Access the IP Camera

Once succeeding in connecting your camera, you can access it via three different ways (Foscam cloud website, APP on smartphone, Web UI).

Foscam Cloud Service



You can access the camera via Foscam cloud website:
www.myfoscam.com.

You can enjoy good experience on this website as below.

- It's quite easy to remotely access and manage all your IP cameras.
- You can enjoy the latest feature firstly on the website, for example cloud storage, video sharing, etc.

If you have already registered an account on Foscam APP, you can directly use this account to log in.

Foscam APP



You can use Foscam APP to view the video on your camera anytime, anywhere.

Note:

You can experience new features, including EZLink, Online-Update, Message Push, etc., ONLY on "Foscam" APP. Any other third-party APP, other than "Foscam", can't support all these new features.

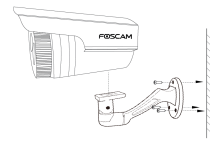
Web UI



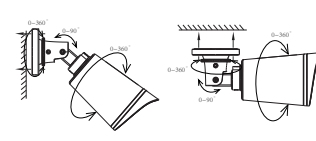
If you want to manage your camera more professionally, we suggest you to access your camera via browser. You can download the "Equipment Search Tool" from <http://www.foscam.com> to your computer, then access the camera directly via the search tool.

6 Hardware Installation

FI9803P



FI9900P V2 / FI9800P



1. Screw the mount on the wall with screws provided.
2. Install the camera on the mounting bracket with 1 screw to complete installation. (Only FI9803P)

Please Note:

Ensure that the rain or water will not reach the connector ports at the end of the pig tail wiring. These connectors are not weather-resistant.

7 Important Notice

Camera Username / Password

The camera username / password are used to access and manage your camera on computer. They can improve the security of your camera significantly.

If you have forgotten either of them, you need to press and hold the "Reset" button on the camera powered on. After hearing the voice prompt, release the button. The camera will automatically reboot and the default settings will be restored. Then the default username / password become admin / (blank).

After restoring to the factory default settings, you need to delete the camera from Foscam APP, and then add it again.

Foscam cloud service Account / Password

Foscam cloud service account / password is used to access Foscam APP or Foscam cloud service website, you can register the account / password on one of them.

Storage Media

Support cloud storage, NVR(Network Video Recorder), Micro SD card. If you hope to video for a whole day, it is suggested to use the Foscam NVR.

Firmware Upgrade

You can upgrade the firmware on Foscam APP with new feature "One-key Online Upgrade"(Enter Foscam APP, select "Settings > Firmware Upgrade").

You also can download the latest version to upgrade your camera from office website <http://www.foscam.com> (Access the website, select "Support > Download Center > Firmware Downloads").

Safety Tips

- Please check whether the power supply is matched before using the camera.
- Please fix the camera and brackets with the provided locating screws to avoid falling down.
- To avoid the risk of fire or electric shock, please keep your camera in dry and cool place, and do not let the camera be affected with damp.
- The camera is electronic equipment, please keep it away from children.
- Change your default port to a greater range to avoid hackers' invasion.
- Check the logs of your Foscam cameras often. Foscam Cameras have embedded logs reminding you which IP addresses are accessing the camera.

8 Technical Support

If you have any problems with your Foscam IP Camera, please contact the Foscam reseller you purchased from. If your problem still can't be solved, please send your e-mail to the technical support team of Foscam headquarter at tech@foscam.com.

Your valuable comments and suggestions on improving Foscam products are welcomed!

FOSCAM®



CE Certificate Website:

<http://www.foscam.com/company/ce-certificate.html>

www.foscam.com